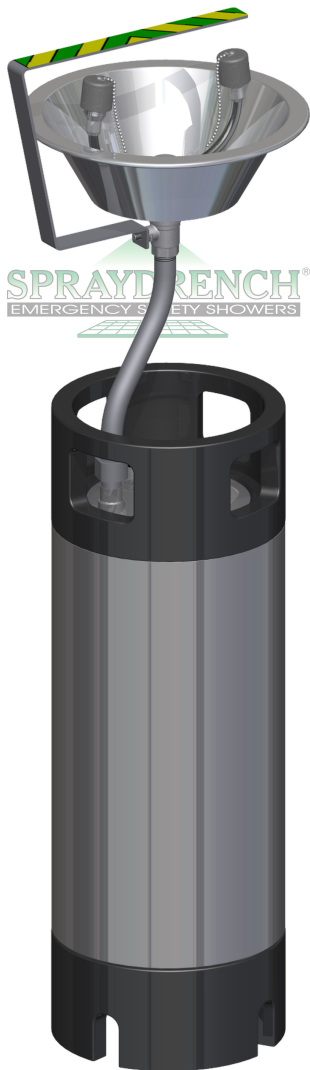


WHEN SAFETY COMES FIRST
SPRAYDRENCH[®]
 EMERGENCY SAFETY SHOWERS

HEW 019 SH



Detailed Description

Portable Eye/Face Wash Station 10-12 L (Vessel 19 L) c/w Twin Aerator Nozzle with Dust Caps on Wishbone Array To Be Pneumatically Charged

(Supplied Empty)

Best Suited Applications

- Low risk areas
- Commissioning activities
- Field staff
- Maintenance crews
- Hazardous substance maintenance

Eyewash: Twin Aerator Nozzles

20 lpm

Flow Rates at design pressure of ± 2.5 bar(g)

Additional Info.

Material of Construction Stainless Steel

Approx. Floor Foot Print (cm) ± 35 (L) x 35 (W) x 105 (H)

Single Unit Weight (kg) ± 7 (Empty)

Typ. Single Unit Pack Dim. (cm) ± 45 (L) x 45 (W) x 105 (H)

All **SPRAYDRENCH**[®] products are manufactured according to the following standards:

ANSI Z358.1-2014
 DIN 12899-3:2008

EN15154-1:2006-12
 EN15154-2:2006-12
 EN15154-5:2019-12

Further Detail Available on Request

- Eye Wash
- Portable 19 lt
- Stainless Steel
- Hand Operated Eye Wash

HEW 019 S H

TEL: +27 (0)11 466 2100 | FAX: +27 (0)11 466 0618

spray nozzle (PTY) LTD

sales@spraynozzle.co.za

PO BOX 2369, HALFWAY HOUSE, SOUTH AFRICA, 1685 | REG:1971/014137
 WWW.SPRAYDRENCH.CO.ZA | WWW.SPRAYNOZZLE.CO.ZA

SPRAYDRENCH[®]
 EMERGENCY SAFETY SHOWERS